

GT Impax Tile Product Specifications

PART 1 - GENERAL

Work Details:

The work specified in this section consists of the installation of GT Impax Tile in accordance with these specifications, and in conformity with the dimensions and notes shown in the plans.

Quality Assurance & Compliance Details:

Impact Attenuation - ASTM F1292-04: When installed correctly, GT Impax recycled rubber tiles will, when tested according to ASTM F1292-04 have a G-max of less than 200, and a HIC of less than 1000.

Dimensions, Inches	Critical Height, Feet
2.25 thick x 24 x 24 (2.5 thick x 24 x 24 for western states)	6
3.75 thick x 24 x 24 (3.5 thick x 24 x 24 for western states)	8

Accessibility of Surface Systems - ASTM F1951-08: All GT Impax recycled rubber tile surfacing meets the requirements of ASTM 1951-99, Specification for Determination of Accessibility of Surface Systems Under and Around Playground Equipment.

IPEMA Certification: Manufacturer must provide proof of certification. “In the interest of public playground safety, IPEMA provides an independent laboratory which validates a manufacturer's certification of conformance to ASTM F1292-04 and ASTM F2075-04. A list of current validated products, their thickness and critical heights may be viewed at www.ipema.org.”

PART 2 - MATERIAL DATA

Rubber Tile:

Physical Properties: GT Impax recycled rubber tile surfacing meets strict testing standards to provide required shock absorption, long wear, water permeability, traction and wear resistance. If required, your GameTime representative can provide more information on these tests.

PART 2 - MATERIAL DATA CONTINUED

Standard Colors: Black, Green, Red, Gray

Special Colors: Available upon request.

Accessories: A wide variety of accessories are available to transition to existing surface, provide wheelchair access and to allow tile layout to match the fall zone. Your GameTime representative can prepare custom drawings of tile surfaces suitable for your playground.

Adhesive:

GT Impax adhesive is a one-part “glue” and is ready to use when poured out of container. Do not open container prior to time for use in installation. Adhesive is spread in a thick film coat on the base surface and each gallon will adhere approximately 40 to 60 square feet of surfacing.

PART 3 - SUB-BASE TYPES & DETAILS

Concrete Surfaces:

Concrete surfaces must be thoroughly cured and free from hydrostatic pressure before installing GT Impax tiles (28 days after pour). All surfaces should be flat, level, clean, and dry before applying adhesive for installation. The concrete finish should be reasonably smooth to reduce the amount of adhesive required. Concrete surface should be free from paint, dirt, oil, or other surface contamination before applying GT Impax adhesive. Any separation of concrete layers, heaving, etc. is the sole responsibility of the installer and/or owner. Assure good drainage of the area by either a well defined gradient of the surface or well placed drainage pipe in lower spots of the area.

Asphalt Sub Surface:

Asphalt sub surface must be hard, level, and free of grease, oil, and other contaminants. Avoid installation on new asphalt until surface oil has had time to dissipate (30 days) and drainage can be evaluated. Any separation of asphalt or blacktop layers, heaving etc. is the sole responsibility of the installer and/or owner. Insure good drainage of the area by either a well-defined gradient of the surface or well-placed drainage pipe in lower spots of the area.

PART 3 - SUB-BASE TYPES & DETAILS CONTINUED

Crushed Gravel / Geotextile Sub Surface:

Compacted gravel surfaces are the sole responsibility of the installer/owner to provide a stable compacted sub surface with proper drainage. Standard sub surface of 6" minimum medium to coarse crushed gravel (3/8" minus) moisten and compacted to 95% proctor. A 1/4" graded medium sand compacted should be used to smooth the surface. A geotextile filter cloth is then put over the top of the compacted surface. A 12" overlap on all joints is required. Secure joints with duct tape or mono compound adhesive.

The installation should be recessed the depth of the tile plus a minimum 4" of compacted gravel as described above. An edging of concrete around the perimeter is recommended to contain tiles to play area. The tiles should then be glued to the geotextile cover fabric, by applying GT Impax adhesive to both geotextile and tile base. Follow the instructions as outlined in the GT Impax installation instructions. For crushed gravel/geotextile sub surface please call your distributor for further details as required.

PART 4 - SITE PREPARATION AND REQUIREMENTS

SubSurface Requirements:

GT Impax tiles may be applied to concrete, asphalt, wood, and compacted crushed gravel/geotextile overlay sub surfaces. All sub surfaces should be properly excavated and applied to insure:

1. Sub surface drainage.
2. Non-Separation of concrete layers.
3. Prevention of Heaving due to freeze/thaw or unstable ground conditions.

The stabilization of the sub surface is the sole responsibility of the installer and/or owner. Sub surface installation should assure good drainage of the area by either a well-defined gradient of the surface or well-placed drainage pipe in lower spots of the installation. The GT Impax tiles shall be adhered to the concrete, asphalt, geotextile or wood surface using GT Impax adhesive following the installation instructions for glue down installations. Your distributor should be contacted regarding the best application conditions for your installation.

PART 5 - INSTALLATION

Prior to Installation:

- The GT Impax tiles and transition pieces intended for this installation have been shipped to you on pallets with the tile shrink wrapped and strapped. Once the packing is removed, please inspect the exposed edges for any damage. Next confirm shipment to packing list and notify supplier of any damage or shipment discrepancies.
- Installation surface should be clean and dry prior to installation. Tiles must be clean and dry prior to installation. Moisture acts as a catalyst to the GT Impax Adhesive, so dry tiles and surface are essential.
- Temperature variations will also affect the tiles. Tiles will contract in cold weather and expand in warm weather. This is a natural effect of the rubber and is to be expected. This will not lessen the impact resilience of the mat as in meeting the ASTM Standard F1292 as they pass the resilience tests at both low and high temperatures.
- Review engineering plans for layout and ensure that the Consumer Product Safety Commission recommendations for a use zone are met (Handbook for Public Playground Safety) and contact owner/agency with any discrepancies.

Tools and Equipment Necessary for Installation:

- Rubber Gloves
- Safety Gloves
- Razor Knife with Extra Blades
- Chalk Line
- Carpenter's Square
- Square-Notched Trowel - 1/8"
- Water Spray Bottles (Mist)
- Rubber Hammer
- Measuring Tape
- Serrated Filet Knife
- Compass with Marker Pen (to mark diameter of equipment supports)

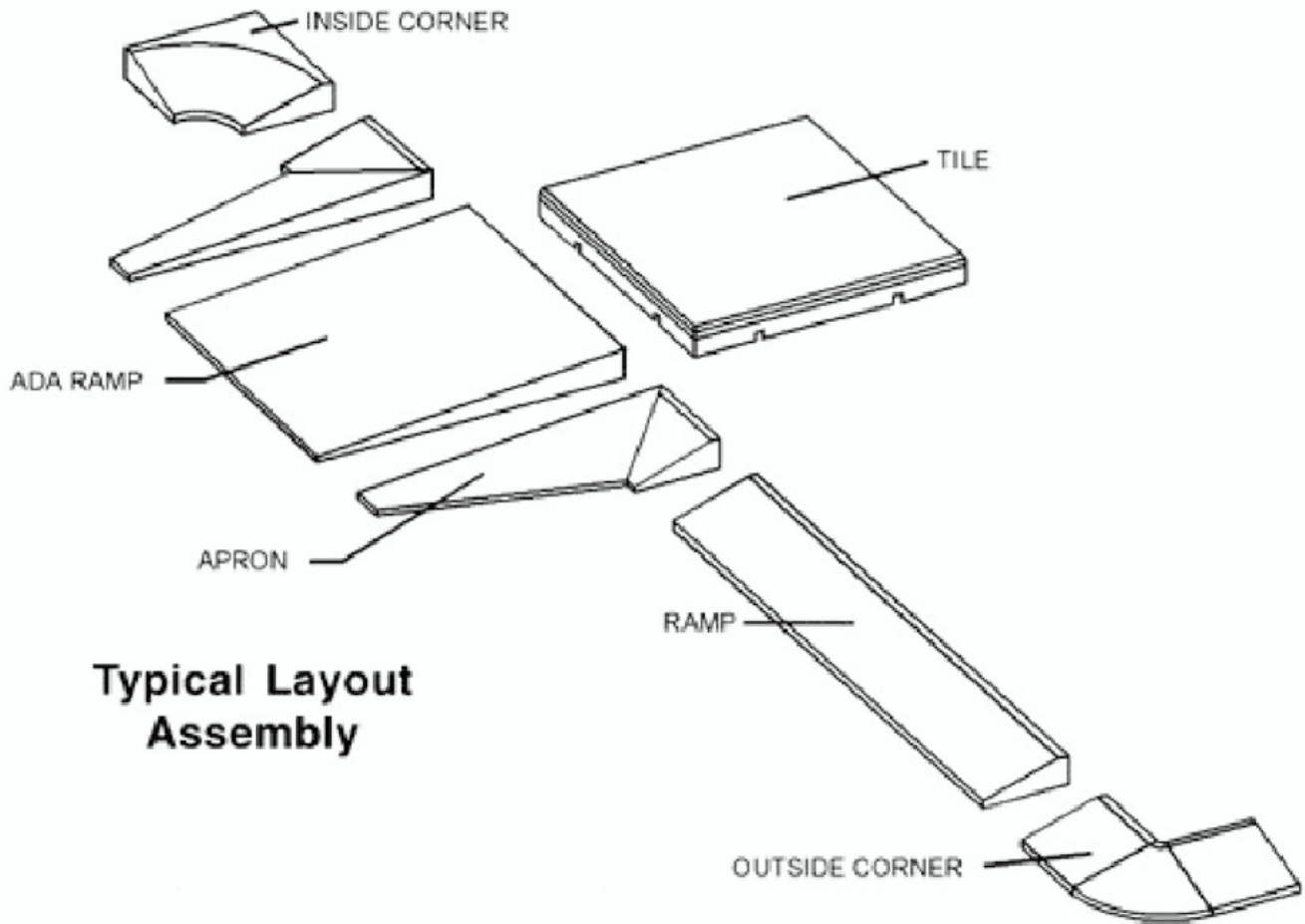
Installation Checklist:

- Insure that the base surface is clean, level, and dry. Tiles must be dry. Check ambient air temperature. Minimum temperature for installation is 50 degrees and rising.
- Please note: All play equipment must be permanently installed prior to tile surfacing installation.

PART 5 - INSTALLATION (Continued)

Surfacing Layout:

- Lay tiles (transition pieces if required) from the further corner along base edge in two directions. (90 Degrees) Lay out the rest of the installation, leaving out any tiles that must be "cut to fit". Keep edges straight and aligned horizontally and vertically.



Installation of Surfacing Product:

- Once installation layout has been completed; adhere all perimeter pieces. If drainage is a concern, allow a 1/4" gap between each Ramp piece for drainage.
- Install balance of surfacing using generally accepted installation procedures in compliance with engineering detail drawing for installation. Interior surfacing can be totally adhered (glued) to base surface or, left unattached to base surface and left to float.

PART 5 - INSTALLATION (Continued)

Adhesive:

- GT Impax adhesive is used to secure the outside perimeter (tiles, corners, and/or ramps) of each installation. It can also be used to secure the interior tiles, if required. Approximate coverage is 50 square feet per gallon of adhesive.
- The adhesive is to be trowelled into place (thick film) onto the asphalt or concrete base surface. Adhesive should be stored in a dry place. Do not subject Adhesive to freezing temperatures under any conditions.

Cure Time (Typical Installation):

- The cure time of GT Impax Adhesive is dependent on several factors. The moisture levels and temperature levels of installation surface, as well as, the ambient air temperature and relative humidity will affect the time required for the cure of the adhesive. Generally, the higher the temperature, the shorter the cure time; and the higher the moisture levels, the shorter the cure time.
- The following information is provided based on trial installations performed with the GT Impax Adhesive to determine approximate cure times under various temperature and humidity conditions.

<u>Temperature</u>	<u>Relative Humidity</u>	<u>Approximate Cure Time</u>
115° F	> 50%	4 hours +
70° F	> 50%	18 hours
45° F	> 50%	30 hours

Disclaimer:

- The installation guidelines represent a typical installation and generally accepted installation practices should be followed. Use of a trained installation professional is recommended for best results.
- GameTime does not warrant any installation work and specifically disclaims liability for any direct or indirect personal injury, property damage or other costs or losses resulting from incorrect or inadequate installations.

PART 6 - WARRANTY

GT Impax warrants recycled rubber tile against premature deterioration to the point of failure because of weathering for a period of five years. Ask your GameTime representative for a copy of our full GT Impax Recycled Rubber Tile warranty.

PART 7 - MAINTENANCE

Ask your GameTime representative for a copy of our full GT Recycled Rubber Tile maintenance details.



GT Impax Tile Warranty

Subject to the following terms and conditions, GameTime (SELLER) warrants to the Buyer that the GameTime recycled rubber tile surfacing (Tile) sold to the Buyer will be free from manufacturing defects at the time of their delivery to the job site.

If, upon inspection by the Seller, the Tile evidences manufacturing defects, Seller's liability and Buyer's remedies are limited, at Seller's option, to the repair or replacement of the defective Tile at the F.O.B. point in the original contract of sale.

Seller further warrants that the Tile will not prematurely deteriorate to the point of failure because of weathering for a period of five (5) years from the date of sale if properly installed, maintained and used for the purpose for which the Seller intended.

Buyer shall give Seller notice of a claim under this warranty within thirty (30) days of discovering the premature deterioration of the Tile.

If, upon inspection by the Seller, the Tile shows premature deterioration because of weathering within the five (5) year period stated herein, Seller's liability and Buyer's remedies are limited at Seller's option to the providing of repair material for the original Tile or credit to be applied toward the purchase of the new Tile, the value of these remedies being determined by the Seller based upon the number of remaining months of the unexpired warranty used to pro-rate at the current price for the Tile. The maximum pro-rated value allowed by Seller for repair or credit shall not exceed the original Tile purchase price.

NO REPRESENTATIVE OF THE SELLER HAS AUTHORITY TO MAKE ANY REPRESENTATIONS OR PROMISES EXCEPT AS STATED HEREIN.

THERE ARE NO WARRANTIES EITHER EXPRESSED OR IMPLIED, INCLUDING THE IMPLIED WARRANTIES OF MERCHANT ABILITY AND FITNESS FOR A PARTICULAR PURPOSE, WHICH EXTEND BEYOND THE WARRANTIES CONTAINED IN THIS DOCUMENT. GAMETIME SHALL NOT BE LIABLE FOR ANY INCIDENTAL, CONSEQUENTIAL OR OTHER DAMAGES TO THE STRUCTURE OR ITS CONTENTS ARISING UNDER ANY THEORY OF LAW WHATSOEVER.

Warrantor: GameTime
P.O. Box 680121, Fort Payne, AL 35968
800-235-2440

Order number:

Name of project:

Customer:

Location:

Date of installation:

Representative:

Date:



MAINTENANCE GUIDELINES

Recycled Rubber Tile

Outdoor Installations:

Hose off entire playground surface to remove food, drink, sand, dirt and loose debris. This can be part of a monthly routine maintenance program.

A pressure washer may be used provided the water pressure does not exceed 1,500 psi and the spray nozzle should not be closer than 12 inches to the surface. This type of maintenance should be done only on an as-needed basis.

On heavily stained isolated spots, while surface is damp from hosing, apply a sufficient amount of a mild household or commercial detergent. For adequate coverage, use a hand-held spray bottle, scrub thoroughly with a 10-inch medium basin bristle scrub brush. Repeat as necessary on extremely tough stains.

These cleaning procedures provide no guarantee of stain removal. However, a stain may become more difficult or even impossible to remove if not addressed immediately.

For general cleaning, apply a mixture of full strength mild household or commercial detergent and water to the damp surface. Be sure to follow the directions for the use on the cleaner you may choose from a local supplier. Using a garden pump sprayer, apply mixture to an area approximately 4 feet by 4 feet in size. Using the 10 inch medium basin bristle scrub brush, clean each 4' x 4' section and then repeat this process until the entire playground has been thoroughly cleaned.

Once the entire surface has been cleaned, rinse thoroughly using a garden hose with nozzle attachment.

Tips For Best Results:

Perform cleaning during early morning or late afternoon so that your cleaner will have time to react without evaporating.

Area must be damp prior to applying cleaning solution.

Clean in small 4 ft. x 4 ft. sections so that you can make sure you scrub the surface thoroughly so to eliminate the possibility of dirty spots and/or streaking in areas that have been missed.

Do not use any steaming or hot water machines for cleaning as this may cause delamination of surface.

Recommended Cleaning Aids:

Mild household or commercial detergent
Hand Spray Bottle
Half-Gallon Garden Pump Spray
10-inch medium bristle scrub brush
Garden hose with spray nozzle
Pressure washer, if necessary

Indoor Installations:

Weekly or bi-weekly as needed, damp mop as much of the surface as possible.

For isolated stains, apply a mild household or commercial detergent and scrub the area with a basin straw (medium bristle) brush.

Do not use any steaming or hot water machines for cleaning as this may cause delamination of surface.

Excess water should be vacuumed up immediately to prevent standing water or damp spots.

Drying time may vary depending on indoor temperatures.

Recommended Cleaning Aids:

Mild household or commercial detergent
Hand Spray Bottle
10-inch medium bristle scrub brush
Carpet Shampoo/Cleaner
Wet/Dry Vacuum

Note: The following chemicals can cause potential damage to the GTImpax Recycled Rubber Tile Surfacing and should be avoided on both outdoor and indoor installations:

Disinfectants

Concentrated Bleach

Gasoline

Diesel, Hydraulic and Lubricating Oils

Weak Acids

Organic Solvents